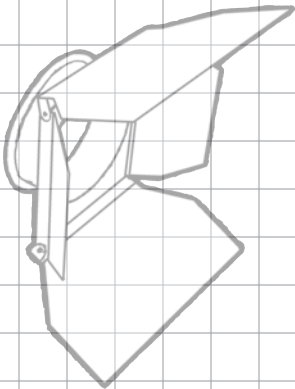


# ProXS™

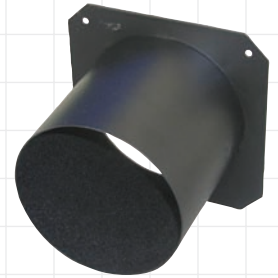
**PROFESSIONAL  
FIXTURE ACCESSORIES**



## Top Hats

- Cold-rolled steel construction with glare-reducing flame-retardant flocked finish standard on internal surfaces

Part No.	To Fit Fixture	Frame Size	Aperture Diameter	Snoot Length
PRX6TH5	S4, SL, Shakespeare, Selecon	6.25" x 6.25"	5"	5"
PRX6TH3	S4, SL, Shakespeare, Selecon	6.25" x 6.25"	5"	3"
PRX7TH6	6" Leko, 6" Theatre Fresnel, 360Q	7.5" x 7.5"	6"	6"
PRX7TH6S	S4 Zoom, S4 PAR, PARNel	7.5" x 7.5"	6.75"	6"
PRX7TH3	6" Leko, 6" Theatre Fresnel, 360Q	7.5" x 7.5"	6"	3"
PRX7TH3S	S4 Zoom, S4 PAR, PARNel	7.5" x 7.5"	6.75"	3"
PRX10TH8	PAR64, 8" Theatre Fresnel	10" x 10"	8"	8"
PRX10TH3	PAR64, 8" Theatre Fresnel	10" x 10"	8"	3"
PRX12TH10	S4 10°, SL 10°	12" x 12"	10"	10"
PRX14TH12	S4 5°	14" x 14"	12"	12"



## Half Hats

- Cold-rolled steel construction with glare-reducing flame-retardant flocked finish standard on internal surfaces

Part No.	To Fit Fixture	Frame Size	Aperture Diameter	Snoot Length
PRX6HH5	S4, SL, Shakespeare, Selecon	6.25" x 6.25"	5"	5"
PRX6HH3	S4, SL, Shakespeare, Selecon	6.25" x 6.25"	5"	3"
PRX7HH6	6" Leko, 6" Theatre Fresnel, 360Q	7.5" x 7.5"	6"	6"
PRX7HH6S	S4 Zoom, S4 PAR, PARNel	7.5" x 7.5"	6.75"	6"
PRX10HH8	PAR64, 8" Theatre Fresnel	10" x 10"	8"	8"
PRX12HH10	S4 10°, SL 10°	12" x 12"	10"	10"
PRX14HH12	S4 5°	14" x 14"	12"	12"



## Drop-in Irises

- Fits ETC Source Four® or Jr. iris slot
- Leaves have 600° temperature rating

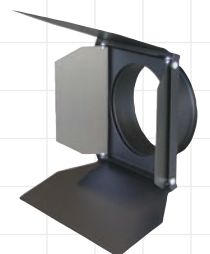
Part No.	To Fit Fixture	No. of Leaves
PRXIRISS4	S4	18
PRXIRISS424	S4	24
PRXIRISS4JR	S4 Junior	18



## 4-Way Barndoors

- Full size aperture does not limit light output of fixture
- Available with or without built in 2" color extender

Part No.	To Fit Fixture	Frame Size	Snoot Length
PRX7BDR	S4 PAR, PARNel, 6" Theatre Fresnel - No Color Extender	7.5" x 7.5"	0"
PRX7BDRE	S4 PAR, PARNel, 6" Theatre Fresnel - With Color Extender	7.5" x 7.5"	2"
PRX9.5BDR	PAR64 - No Color Extender	9.5" x 9.5"	0"



## TVMP Adapter

- Converts theatrical lighting instruments to interface with studio grip equipment
- Machined steel construction with chrome-plated finish

Part No.	To Fit Fixture
PRXTVMP	Any with 1/2" hole in yoke





- Cold-rolled steel construction
- Tough powdercoated black finish

## Donuts

Part No.	To Fit Fixture	Frame Size	Aperture Diameter
PRX6DN	S4, SL, Shakespeare, Selecon	6.25" x 6.25"	3"
PRX7DN	6" Leko, 6" Theatre Fresnel, 360Q	7.5" x 7.5"	3"
PRX12DN	S4 10°, SL 10°	12" x 12"	6"
PRX14DN	S4 5°	14" x 14"	7"



- Cold-rolled steel construction
- Tough powdercoated black finish

## Color Frames

Part No.	To Fit Fixture	Frame Size	Aperture Diameter
PRX6CF	S4, SL, Shakespeare, Selecon	6.25" x 6.25"	5"
PRX7CF	6" Leko, 6" Theatre Fresnel, 360Q	7.5" x 7.5"	6"
PRX7CFS	S4 Zoom, S4 PAR, PARNel	7.5" x 7.5"	6.75"
PRX10CF	PAR64, 8" Theatre Fresnel	10" x 10"	8"
PRX12CF	S4 10°, SL 10°	12" x 12"	10"
PRX14CF	S4 5°	14" x 14"	12"



- Cold-rolled steel construction
- Helps prevent gel burnout
- Tough powdercoated black finish

## Color Extenders

Part No.	To Fit Fixture	Frame Size	Aperture Diameter	Snoot Length
PRX6CX5	S4, SL, Shakespeare, Selecon	6.25" x 6.25"	5"	5"
PRX6CX3	S4, SL, Shakespeare, Selecon	6.25" x 6.25"	5"	3"
PRX7CX6	S4 Zoom, S4 PAR, PARNel, 6" Leko, 6" Theatre Fresnel, 360Q	7.5" x 7.5"	6.75"	6"
PRX7CX3	S4 Zoom, S4 PAR, PARNel, 6" Leko, 6" Theatre Fresnel, 360Q	7.5" x 7.5"	6.75"	3"
PRX10CX5	PAR64, 8" Theatre Fresnel	10" x 10"	8"	5"



- Traditional aluminum sandwich-style design
- Includes insulated pull handle

## Pattern Holders

Part No.	To Fit Fixture	Pattern Size
PRXPHA	S4	A
PRXPHB	S4	B
PRXPHG	S4	86mm Glass
PRXPHM	S4 Junior	M
PRXPHMG	S4 Junior	86mm Glass



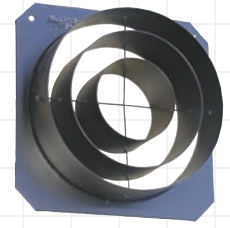
- Great for concealing fixtures or for dance lighting
- Adjustable mirror angle for precise beam control

## Beam Bender

Part No.	To Fit Fixture	Frame Size
PRX6BB	S4, SL, Shakespeare, Selecon Fixtures with 6.25" square mounting frames	6.25" x 6.25"

## Concentric Ring Louver

- Low profile spill control for the Source Four® PAR and PARnel.
- Cold-rolled steel construction.
- As effective as a 6" snoot.
- Tough powdercoated black finish.



Part No.	To Fit Fixture	Frame Size	Aperture Diameter	Snoot Length
PRX7CR	S4 PAR, PARnel	7.5" x 7.5"	6.75"	2"

## Egg Crate Louver

- Spill control with the lowest profile
- Cold-rolled steel construction
- 1/2" louver grid provides full 45° cutoff
- Tough powdercoated black finish



Part No.	To Fit Fixture	Frame Size	Aperture Diameter	Snoot Length
PRX7EC	S4 PAR, PARnel	7.5" x 7.5"	6.75"	0.5"

## VL2000 Wide Top Hat

- Effective spill control without limiting fixture movement
- Cold-rolled steel construction
- Installs without modifying fixture
- Tough powdercoated black finish



Part No.	To Fit Fixture
PRXVL2KSR	VARI*LITE VL2000
PRXVLSRSPRING	REPLACEMENT SPRING FOR ALL VARI*LITE SPILL RINGS

## VL5 Concentric Ring

- Effective spill control without limiting fixture movement
- Cold-rolled steel construction
- Installs without modifying fixture
- Tough powdercoated black finish



Part No.	To Fit Fixture
PRXVL5SR	VARI*LITE VL5

## Studio Color Spill Ring

- Effective spill control without limiting fixture movement
- Cold-rolled steel construction
- Installs without modifying fixture
- Tough powdercoated black finish



Part No.	To Fit Fixture
PRXSCSR	High End Systems Studio Color

LITPROXS.051710



### LOS ANGELES

10643 Glenoaks Blvd.  
Pacoima, CA 91331  
USA

Tel: +1 818.899.8818  
Fax: +1 818.899.8813

### LONDON

21 Armstrong Way  
Southall  
UB2 4SD England

Tel: +44 (0)20.8574.9700  
Fax: +44 (0)20.8574.9701

### NEW YORK

100 Asia Place  
Carlstadt, NJ 07072  
USA

Tel: +1 201.896.8600  
Fax: +1 201.896.8601

### BEIJING

No. 309, Building 6  
Sanlitun Nanlu  
Chaoyang District  
Beijing, China 100027

Tel: +86 10.8492.1587  
Fax: +86 10.8492.7635

### TORONTO

409 Saddle St. West  
Box 654, Durham  
Ontario NOG-1R0

Tel: +1 519.369.9990  
Fax: +1 519.369.9992