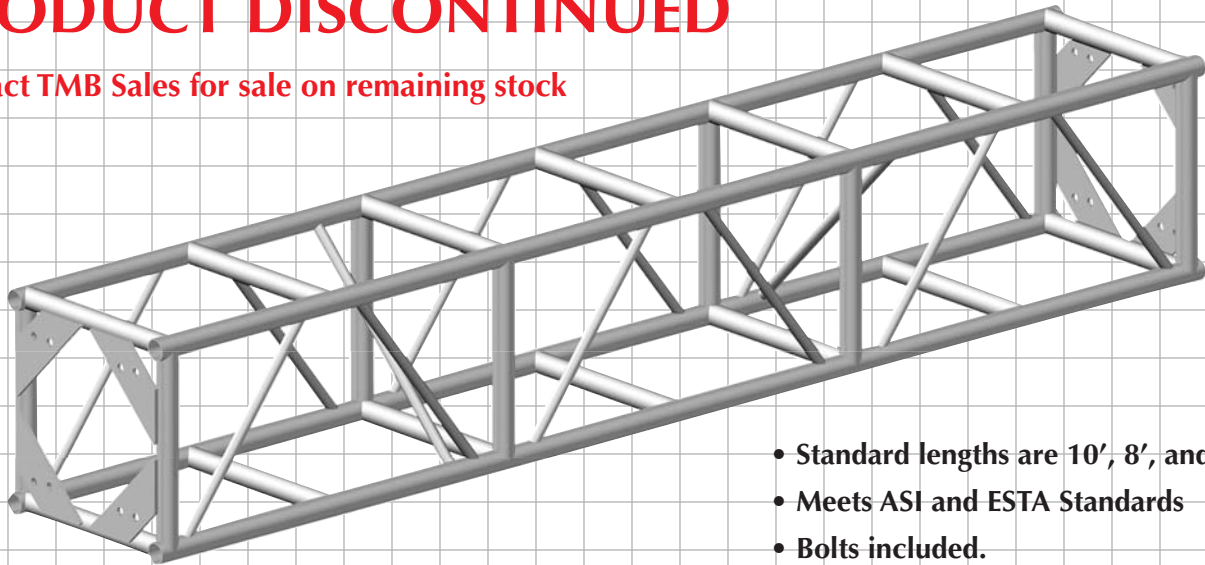




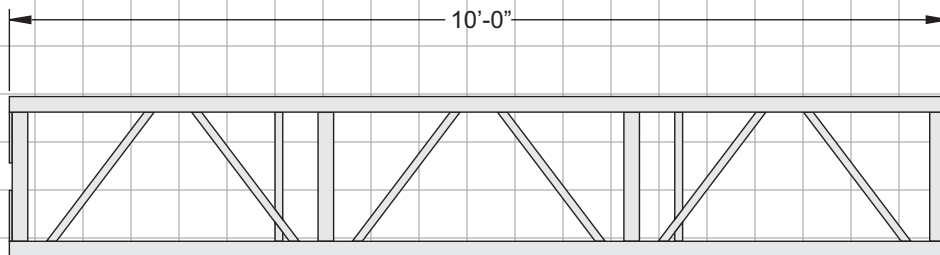
Medium-Duty Truss 20.5" x 20.5" Plated

PRODUCT DISCONTINUED

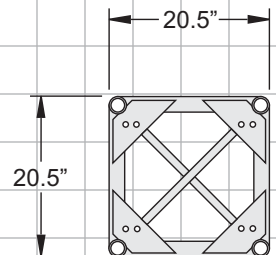
Contact TMB Sales for sale on remaining stock



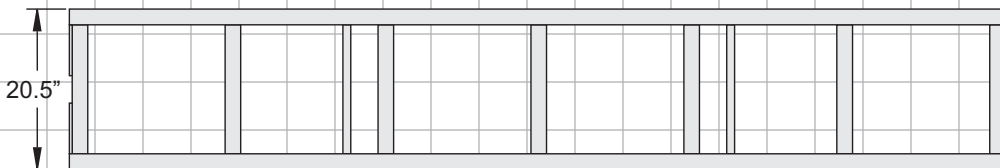
- Standard lengths are 10', 8', and 5'.
- Meets ASI and ESTA Standards
- Bolts included.
- Main chords are 2" OD x 1/8" 6351T6 and 6082T6 aluminum.
- Diagonals are 1" OD. x 1/8" 6351T6 and 6082T6 aluminum.



FRONT VIEW



END VIEW



TOP VIEW



LOS ANGELES

10643 Glenoaks Blvd.
Pacoima, CA 91331
USA

Tel: +1 818.899.8818
Fax: +1 818.899.8813

LONDON

21 Armstrong Way
Southall
UB2 4SD England

Tel: +44 (0)20.8574.9700
Fax: +44 (0)20.8574.9701

NEW YORK

100 Asia Place
Carlstadt, NJ 07072
USA

Tel: +1 201.896.8600
Fax: +1 201.896.8601

BEIJING

No. 309, Building 6
Sanlitun Nanlu
Chaoyang District
Beijing, China 100027

Tel: +86 10.8492.1587
Fax: +86 10.8492.7635

TORONTO

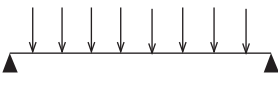
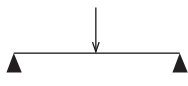
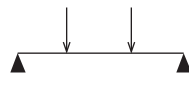
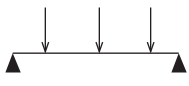
409 Saddle St. West
Box 654, Durham
Ontario N0G-1R0

Tel: +1 519.369.9990
Fax: +1 519.369.9992



Medium-Duty Truss 20.5" x 20.5" Plated

ProSpan MD 20.5" x 20.5" - ALLOWABLE LOADING

SPAN LENGTH		UNIFORMLY DISTRIBUTED LOAD				MAXIMUM ALLOWABLE POINT LOADS					
											
ft	m	lbs	kgs	lbs/ft	kg/m	lbs	kgs	lbs	kgs	lbs	kgs
10	3.05	8564	3893	856	1277	4282	1946	3212	1460	2141	973
20	6.10	4282	1946	214	319	2141	973	1606	730	1071	487
30	9.15	2855	1298	95	142	1427	649	1071	487	714	324
40	12.20	2141	973	54	80	1071	487	803	365	535	243
50	15.24	1713	779	34	51	856	389	642	292	428	195

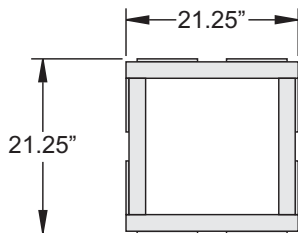
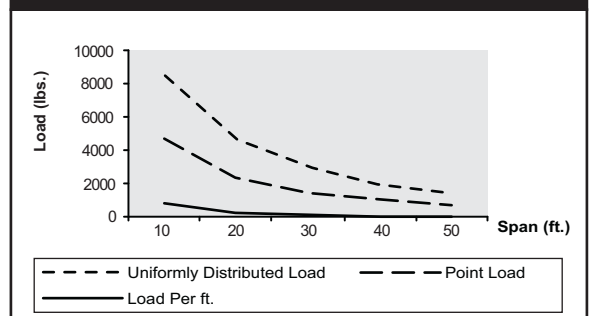
Tested to ESTA standards. Tested with 10'-0" sections. Other section lengths are available.

Standard Unit Weights

Item	Weight	
	lbs	kgs
5' Section - MD 20.5" x 20.5"	56	25
8' Section - MD 20.5" x 20.5"	77	35
10' Section - MD 20.5" x 20.5"	85	39
4-Way Corner Block - MD 20.5" x 20.5"	39	18

Other truss lengths and cornerblock configurations available.

ProSpan MD 20.5" x 20.5" - LOADING



4-Way Corner Block

PRODUCT DISCONTINUED

Contact TMB Sales for sale on remaining stock