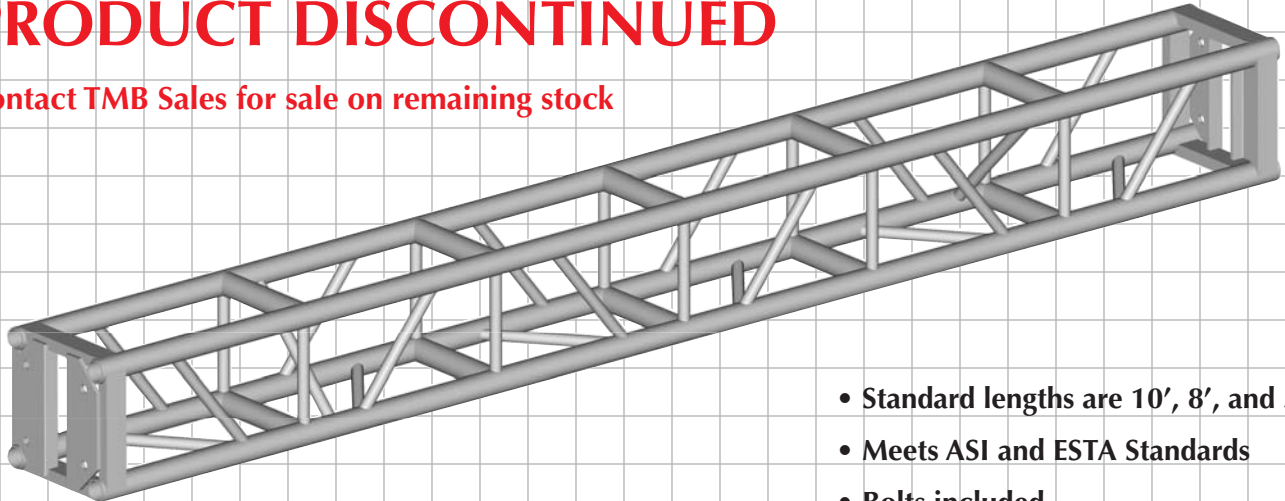




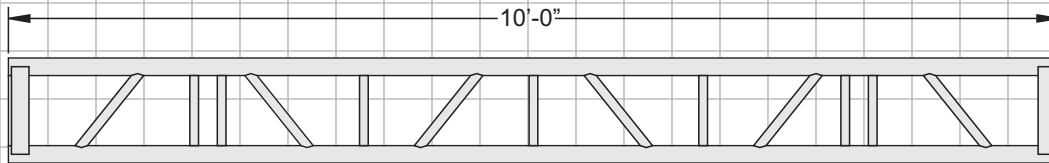
12" x 12" Plated Truss

PRODUCT DISCONTINUED

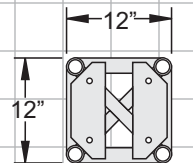
Contact TMB Sales for sale on remaining stock



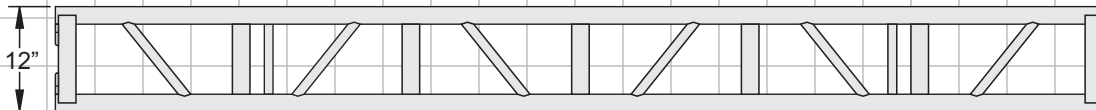
- Standard lengths are 10', 8', and 5'.
- Meets ASI and ESTA Standards
- Bolts included.
- Main chords are 2" OD x 1/8" 6351T6 and 6082T6 aluminum.
- Diagonals are 1" OD x 1/8" 6351T6 and 6082T6 aluminum.



FRONT VIEW



END VIEW



TOP VIEW



LOS ANGELES

10643 Glenoaks Blvd.
Pacoima, CA 91331
USA

Tel: +1 818.899.8818
Fax: +1 818.899.8813

LONDON

2 Commerce Road
Brentford, Middx TW8 8LR
UK

Tel: +44 (0)20.8560.9652
Fax: +44 (0)20.8560.1064

NEW YORK

100 Asia Place
Carlstadt, NJ 07072
USA

Tel: +1 201.896.8600
Fax: +1 201.896.8601

BEIJING

Unit 4, Blk 7, Shizipo
Dongzhimenwai
Dongcheng District
Beijing, China 100027

Tel: +86 10.6417.2286
Fax: +86 10.6415.9475

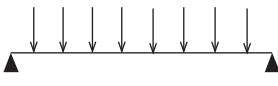
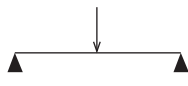
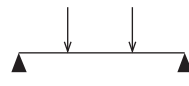
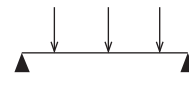
TORONTO

409 Saddler St. West
Box 654, Durham
Ontario N0G-1R0

Tel: +1 519.369.9990
Fax: +1 519.369.9992

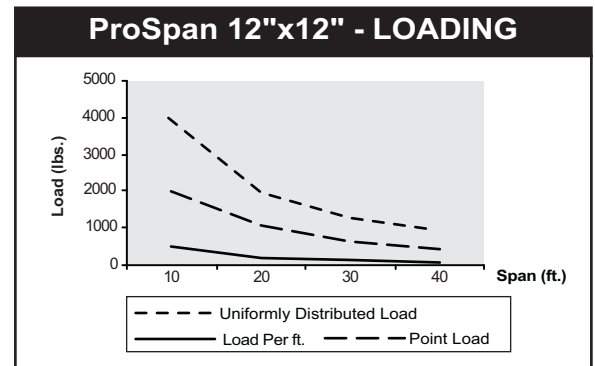


12" x 12" Plated Truss

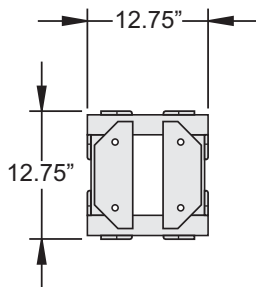
ProSpan 12" x 12" - ALLOWABLE LOADING											
SPAN LENGTH		UNIFORMLY DISTRIBUTED LOAD				MAXIMUM ALLOWABLE POINT LOADS					
											
ft	m	lbs	kgs	lbs/ft	kg/m	lbs	kgs	lbs	kgs	lbs	kgs
10	3.05	3924	1784	392	585	1964	892	1472	669	981	446
20	6.10	1962	892	98	146	981	446	736	334	491	223
30	9.15	1308	595	44	65	654	297	491	223	327	149
40	12.20	981	446	25	37	491	223	368	167	245	111

Tested to ESTA standards. Tested with 10'-0" sections. Other section lengths are available.

Standard Unit Weights		
Item	Weight	
	lbs	kgs
5' Section - 12" x12"	36	16
8' Section - 12" x12"	51	23
10' Section - 12" x12"	61	28
5-Way Corner Block - 12" x12"	26	12



Other truss lengths and cornerblock configurations available.



5-Way Corner Block

PRODUCT DISCONTINUED

Contact TMB Sales for sale on remaining stock